



जिला स्तरतमिलनाडुके लिएकृषि मौसमसलाहकारबुलेटिन

DISTRICT LEVEL

Agro meteorological Advisory Bulletin for the state of Tamil Nadu Bulletin No. 098 /2016

For the period 0830 IST, 07th NOV 2016 to

0830 IST, 09th NOV 2016

Issued on Wednesday, 07th NOV 2016

Issued by

DDGM, Regional Meteorological Centre, India Meteorological Department,
Chennai in collaboration with TNAU and nine AMFU's of Agro climatic Zones of
the Tamil Nadu state

Agro climatic zones of the state

Sl. No	Agro climatic zone	Districts	Agro met field Unit (AMFU) location
1	Northeastern zone	Kanchipuram, Tiruvallur, Cuddalore Tiruvannamalai, Chennai, Villupuram , Vellore	Chennai
2	Northwestern zone	Dharmapuri, Krishnagiri, Salem and Namakkal	Namakkal
3	Western Zone	Erode, Tiuppur and Coimbatore,	Coimbatore,
4	Cauvery Delta zone	Thanjavur, Nagapattinam, Thiruvarur, Karur, Perambalur, Ariyalur and Tiruchirapalli.	Adudurai
5	Southern zone	Virudhunagar, Tirunelveli and Toothugudi	Kovilpatti
6	South Zone	Pudukottai, Madurai, Dindigul, Theni, Ramanathapuram and Sivagangai	Kannivadi
7	High rainfall zone	Kanyakumari	Pechiparai
8	Hilly zone	Nilgiris	Ooty
9	Coastal Zone	Karaikal and Pondicherry	Karaikal



Past Weather Summary for the period 02 .12.16 to 06 .12.16 for the State of Tamilnadu & Puducherry

Temperature:

Maximum Temperature of range 21°C – 34°C prevailed over the state. Kodaikanal and Uthagamandalam recorded Maximum temperature range 18°C – 26°C during the period.

Minimum temperature of range 13°C - 19°C prevailed over the State. Kodaikanal and Uthagamandalam recorded Minimum temperature of range 08°C - 12°C during the same period.

Spatial distribution of Rainfall

Spatial distribution of Rainfall	Date	Area
Widespread (Most places)	02.12.16	Tamilnadu
	02.12.16	Puducherry
Fairly widespread (Many places)	03.12.16	Tamilnadu
Scattered (Few Places)	04.12.16	Tamil Nadu
	05.12.16	Puducherry
Isolated (Isolated Places)	05.12.16 & 06.12.16	Tamil Nadu
Dry	03.12.16 , 04.12.16 & 06.12.16	Puducherry

Chief Amounts of Rainfall (in cms):-

02.12.16: Mahabalipuram (Kancheepuram Dist) 11, Cholavaram (Tiruvallur Dist), Red hills (Tiruvallur Dist) 6 each, Satyabama uty arg (Kancheepuram Dist), Muthupet (Tiruvarur Dist) 5 each, Tirukattupalli (Thanjavur Dist), Anna University (Chennai Dist), Cheyyar (Tiruvannamalai Dist), DGP office (Chennai Dist), Anna uty arg (Chennai Dist), Vedasandur (Dindigul Dist), Tirupuvanam (Sivaganga Dist), Dindigul (Dindigul Dist), Uthiramerur (Kancheepuram Dist), Chengalpattu (Kancheepuram Dist), Chennai(N) (Chennai Dist), Dindigul arg (Dindigul Dist), Maduranthagam (Kancheepuram Dist), Kamatchipuram (Dindigul Dist) 4 each, Sethiathope (Cuddalore Dist), Vallam (Thanjavur Dist), Chennai AP (Kancheepuram Dist), Kvk kattukuppam arg (Kancheepuram Dist), Kodavasal (Tiruvarur Dist), Rameswaram (Ramanathapuram Dist), Grand anaicut (Thanjavur Dist), Venbavur (Perambalur Dist), Puzhal arg (Tiruvallur Dist), Thamaraipakkam (Tiruvallur Dist), Natham (Dindigul Dist), Kelambakkam (Kancheepuram Dist), Valparai taluk office (Coimbatore Dist), Ponneri (Tiruvallur Dist), Vanur (Villupuram Dist), Kodaikanal (Dindigul Dist), Tondi (Ramanathapuram Dist), Cheyyur (Kancheepuram Dist), Sivaganga (Sivaganga Dist), Adirampatnam (Thanjavur Dist), Thirumanur (Ariyalur Dist), Keeranur (Pudukkottai Dist), Nilakottai (Dindigul Dist), Pondicherry (Puducherry Dist), Arakonam (Vellore Dist), Tiruvarur (Tiruvarur Dist), Chittampatti (Madurai Dist), Perambalur (Perambalur Dist), Chembarambakkam arg (Tiruvallur Dist), Poonamalle arg (Tiruvallur Dist), Vandavasi (Tiruvannamalai Dist), Kadavur (Karur Dist), Kancheepuram (Kancheepuram Dist), Pattukottai (Thanjavur Dist), Udumalpet (Tiruppur Dist), Madukkur (Thanjavur Dist), Tozhudur (Cuddalore Dist), Poonamallee (Tiruvallur Dist), Chembarabakkam (Tiruvallur Dist), Trp town (Trichy Dist), Thiruthuraipoondi (Tiruvarur Dist), Sholavandan (Madurai Dist), Poondi (Tiruvallur Dist), Mannargudi (Tiruvarur Dist), Tiruchirappalli AP (Trichy Dist), Manamadurai (Sivaganga Dist), Mettupatti (Madurai Dist), Pamban (Ramanathapuram Dist), Kaveripakkam (Vellore Dist) 3 each, Vedaranyam (Nagapattinam Dist), Ariyalur (Ariyalur Dist), Chatrapatti (odanchatra (Dindigul Dist), Padalur (Perambalur Dist), Perungalur (Pudukkottai Dist), Airport Madurai (Madurai Dist), Sriperumbudur (Kancheepuram Dist), Valangaiman (Tiruvarur Dist), Panchapatti (Karur Dist), Tirupathur (Sivaganga Dist), Sendurai (Ariyalur Dist), Tiruvallur (Tiruvallur Dist), Vellore (Vellore Dist), Vilupuram (Villupuram Dist), Tiruttani (Tiruvallur Dist), Pullambadi (Trichy Dist), Illayangudi (Sivaganga Dist), Kulithalai (Karur Dist), Alangudi (Pudukkottai Dist), Tiruvaiyaru (Thanjavur Dist), Samayapuram (Trichy Dist), Mayanur (Karur Dist), Thiruvallangadu (Tiruvallur Dist), Ulundurpet (Villupuram Dist), Pandavaiyar head (Tiruvarur Dist), Tiruvadana (Ramanathapuram Dist), Devakottai (Sivaganga Dist), Pollachi (Coimbatore Dist), Chinnakalar (Coimbatore Dist), Thali (Krishnagiri Dist), Chettikulam (Perambalur Dist), Illuppur (Pudukkottai Dist), R.s.mangalam (Ramanathapuram Dist), Thuvakudi IMTI (Trichy Dist), Gingee (Villupuram Dist), Sholingur (Vellore Dist), Cuddalore (Cuddalore Dist), JayamkonDam (Ariyalur Dist), Tirukoilur (Villupuram Dist), Uthagamandalam (Nilgiris Dist), Nannilam (Tiruvarur Dist), Manamelkudi (Pudukkottai Dist), Pudukottai (Pudukkottai Dist), Papanasam (Thanjavur Dist), ChiDambaram (Cuddalore Dist), Karaikudi (Sivaganga Dist), K.m.koil (Cuddalore Dist), Neyveli AWS (Cuddalore Dist), Thanjavur pto

(Thanjavur Dist), Valparai pto (Coimbatore Dist), Arimalam (Pudukkottai Dist), Palani (Dindigul Dist), Thogamalai (Karur Dist) 2 each, Vadipatti (Madurai Dist), Kallakurichi (Villupuram Dist), Parangipettai (Cuddalore Dist), Karaikal (Karaikal Dist), Aravakurichi (Karur Dist), Namakkal (Namakkal Dist), Kothagiri (Nilgiris Dist), Kumbakonam (Thanjavur Dist), Virinjipuram AWS (Vellore Dist), Tindivanam (Villupuram Dist), Tambaram (Kancheepuram Dist), Arantangi (Pudukkottai Dist), Nagapattinam (Nagapattinam Dist), Virudachalam (Cuddalore Dist), Gandarvakottai (Pudukkottai Dist), Kalavai AWS (Vellore Dist), Orthanad (Thanjavur Dist), Thiruvidadaimaruthur (Thanjavur Dist), Wallajah (Vellore Dist), Harur (Dharmapuri Dist), Thammampatty (Salem Dist), Tiruvannamalai (Tiruvannamalai Dist), ChiDambaram AWS (Cuddalore Dist), Thanjavur (Thanjavur Dist), R.k.pet (Tiruvallur Dist), Melalathur (Vellore Dist), Paramakudi (Ramanathapuram Dist), Manapparai (Trichy Dist), Aruppukottai (Virudhunagar Dist), Peraiyur (Madurai Dist), Andipatti (Theni Dist), Mylam AWS (Villupuram Dist), Virudhunagar (Virudhunagar Dist), Usilampatti (Madurai Dist), Arani (Tiruvannamalai Dist), Karur (Karur Dist), Srimushnam (Cuddalore Dist), Periyakulam (Theni Dist), Thuraiyur (Trichy Dist), Dharapuram (Tiruppur Dist), Polur (Tiruvannamalai Dist), Thiruchuzhi (Virudhunagar Dist), Marungapuri (Trichy Dist), Gudiyatham (Vellore Dist), Kovilankulam (Virudhunagar Dist), SenDamangalam (Namakkal Dist), Periyakulam AWS (Theni Dist), Sirkali (Nagapattinam Dist), Rasipuram (Namakkal Dist), Tirumayam (Pudukkottai Dist), Mangalapuram (Namakkal Dist), Attur (Salem Dist), Anaikaranchatram (KolliDam (Nagapattinam Dist), Paramathivelur (Namakkal Dist), Ketti (Nilgiris Dist), Aduthurai AWS (Thanjavur Dist), Ap peelamedu (Coimbatore Dist), Peravurani (Thanjavur Dist), Coimbatore south (Coimbatore Dist), Viralimalai (Pudukkottai Dist), Tiruchengode (Namakkal Dist), Naduvattam (Nilgiris Dist), Karambakudi (Pudukkottai Dist), Mulanur (Tiruppur Dist), Hogenekal (Dharmapuri Dist), Sathanur Dam (Tiruvannamalai Dist), Ambur (Vellore Dist) 1 each.

03.12.16 : Kolapakkam arg (Kancheepuram Dist), Virudhunagar (Virudhunagar Dist) 8 each, Airport Madurai (Madurai Dist), Chennai AP (Kancheepuram Dist), Sivakasi (Virudhunagar Dist), Tirupuvanam (Sivaganga Dist), Tiruttani (Tiruvallur Dist), Kancheepuram (Kancheepuram Dist), Chengalpattu (Kancheepuram Dist), Mettupatti (Madurai Dist), Tirumangalam (Madurai Dist) 7 each, Satyabama uty arg (Kancheepuram Dist), Chembarabakkam (Tiruvallur Dist), Virinjipuram AWS (Vellore Dist), Poonamallee (Tiruvallur Dist) 6 each, Chembarabakkam arg (Tiruvallur Dist), Anna University (Chennai Dist), Anna uty arg (Chennai Dist), Kvk kattukuppam arg (Kancheepuram Dist), Vellore (Vellore Dist), Paramakudi (Ramanathapuram Dist) 5 each, Thiruvalangadu (Tiruvallur Dist), Kalavai AWS (Vellore Dist), Cheyyar (Tiruvannamalai Dist), Arakonam (Vellore Dist), Coonoor pto (Nilgiris Dist), Mahabalipuram (Kancheepuram Dist), Thamaraiyakkam (Tiruvallur Dist), Kovilankulam (Virudhunagar Dist), Sriperumbudur (Kancheepuram Dist) 4 each, Melalathur (Vellore Dist), Kaveripakkam (Vellore Dist), Poondi (Tiruvallur Dist), R.k.pet (Tiruvallur Dist), Aruppukottai (Virudhunagar Dist), Kamudhi (Ramanathapuram Dist), Tiruvallur (Tiruvallur Dist), Uthiramerur (Kancheepuram Dist), Coonoor (Nilgiris Dist), Maduranthagam (Kancheepuram Dist), Polur (Tiruvannamalai Dist), Chennai(N) (Chennai Dist), Sholavandan (Madurai Dist), Gudiyatham (Vellore Dist), Madurai south (Madurai Dist), Ponneri (Tiruvallur Dist), Kelambakkam (Kancheepuram Dist), Gobichettipalayam (Erode Dist) 3 each, Melur (Madurai Dist), Kamudhi arg (Ramanathapuram Dist), Uthagamandalam (Nilgiris Dist), Vadipatti (Madurai Dist), Tiruppur (Tiruppur Dist), Tindivanam (Villupuram Dist), Chittampatti (Madurai Dist), Wallajah (Vellore Dist), Manamadurai (Sivaganga Dist), Vandavasi (Tiruvannamalai Dist), Yercaud (Salem Dist), Sathyamangalam (Erode Dist), Sivaganga (Sivaganga Dist), Pallipattu (Tiruvallur Dist), Periyanaickenpalayam (Coimbatore Dist), Tambaram (Kancheepuram Dist), DGP office (Chennai Dist), Natham (Dindigul Dist), Mayanur (Karur Dist),

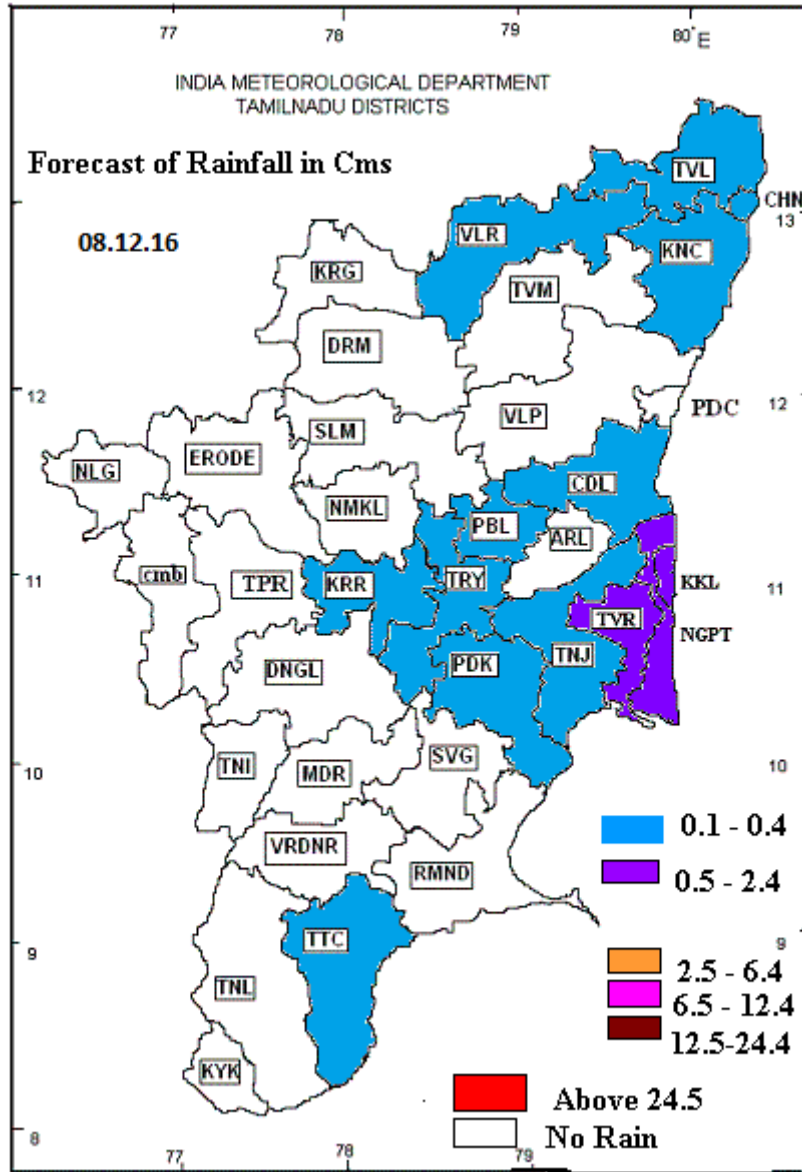
R.s.mangalam (Ramanathapuram Dist), Alangayam (Vellore Dist), Sholingur (Vellore Dist), Arani (Tiruvannamalai Dist), Chinnakalar (Coimbatore Dist) 2 each, Valparai pto (Coimbatore Dist), Kodumudi (Erode Dist), Sattur (Virudhunagar Dist), Coimbatore south (Coimbatore Dist), Erode (Erode Dist), K bridge (Nilgiris Dist), Kothagiri (Nilgiris Dist), Avinasi (Tiruppur Dist), Srivilliputhur (Virudhunagar Dist), Sular (Coimbatore Dist), Viralimalai (Pudukkottai Dist), Paramathivelur (Namakkal Dist), Illayangudi (Sivaganga Dist), Thuraiyur (Trichy Dist), Illuppur (Pudukkottai Dist), Ap peelamedu (Coimbatore Dist), Karur (Karur Dist), Musiri (Trichy Dist), Samayapuram (Trichy Dist), Bhavanisagar (Erode Dist), Kangeyam (Tiruppur Dist), Ambur (Vellore Dist), Coimbatore AWS (Coimbatore Dist), Thiruchuzhi (Virudhunagar Dist), Tiruvaiyaru (Thanjavur Dist), Bhavani (Erode Dist), Panchapatti (Karur Dist), Perungalur (Pudukkottai Dist), Kulithalai (Karur Dist), Aravakurichi (Karur Dist), Rayakottah (Krishnagiri Dist), Thali (Krishnagiri Dist), Tiruchengode (Namakkal Dist), G Bazar (Nilgiris Dist), Ketti (Nilgiris Dist), Perambalur (Perambalur Dist), Keeranur (Pudukkottai Dist), Dindigul (Dindigul Dist), Kadavur (Karur Dist), Mettupalayam (Coimbatore Dist), Cheyyur (Kancheepuram Dist), Shoolagiri (Krishnagiri Dist), Kumarapalayam (Namakkal Dist), Mulanur (Tiruppur Dist), Gingee (Villupuram Dist), Dindigul arg (Dindigul Dist), Perundurai (Erode Dist), Tiruvadanai (Ramanathapuram Dist), Sankaridurg (Salem Dist), Puzhal arg (Tiruvallur Dist), Valangaiman (Tiruvarur Dist), Tirukattupalli (Thanjavur Dist) 1 each

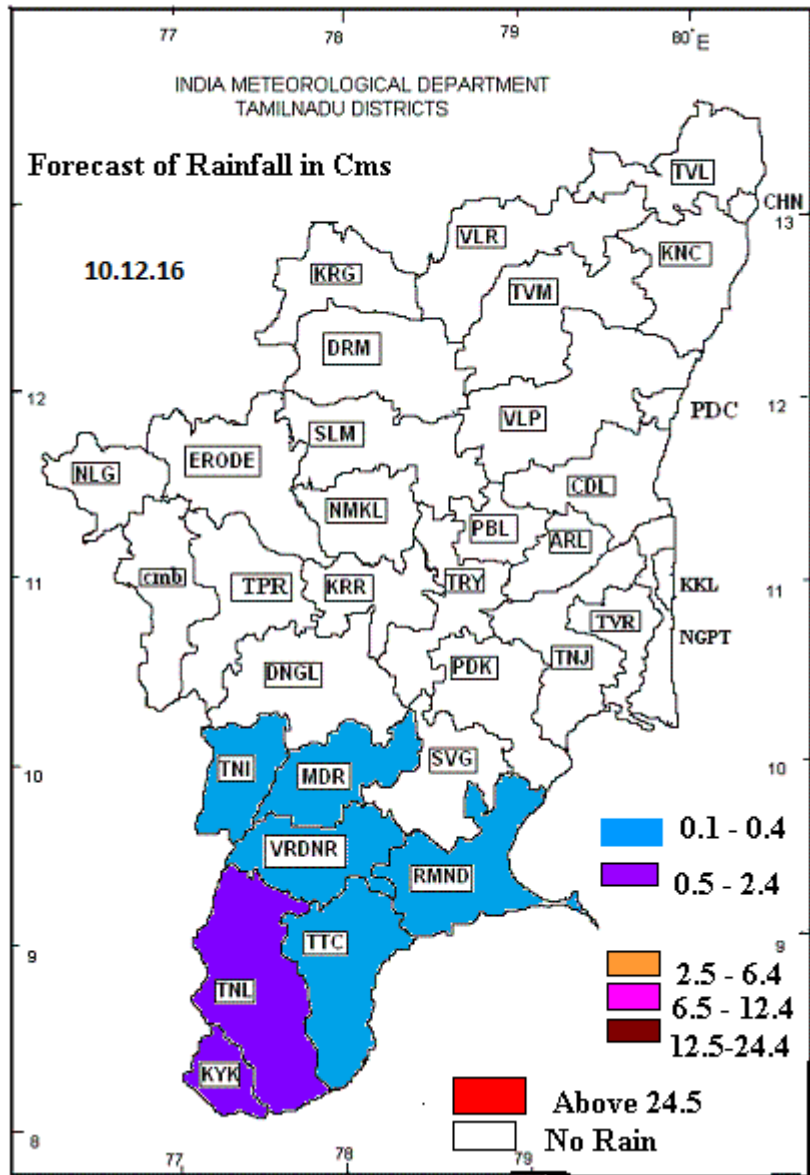
04.12.16 : Sivagiri (Tirunelveli Dist) 6, Coonoor pto (Nilgiris Dist) 5, Sivaganga (Sivaganga Dist), Coonoor (Nilgiris Dist), Nanguneri (Tirunelveli Dist), Paramakudi (Ramanathapuram Dist) 4 each, Chennai AP (Kancheepuram Dist), Thamarapakkam (Tiruvallur Dist), Kothagiri (Nilgiris Dist), Kumarapalayam (Namakkal Dist), K bridge (Nilgiris Dist), Sriperumbudur (Kancheepuram Dist) 3 each, Illayangudi (Sivaganga Dist), Pechiparai (Kanyakumari Dist), Poondi (Tiruvallur Dist), Periyanaickenpalayam (Coimbatore Dist), Uthagamandalam (Nilgiris Dist), Mudukulatur (Ramanathapuram Dist), Cholavaram (Tiruvallur Dist), Aruppukottai (Virudhunagar Dist), Mettupalayam (Coimbatore Dist), Ketti (Nilgiris Dist), Kolapakkam arg (Kancheepuram Dist), Thiruvallangadu (Tiruvallur Dist) 2 each, Coimbatore AWS (Coimbatore Dist), Kadaladi (Ramanathapuram Dist), Rajapalayam (Virudhunagar Dist), Manamadurai (Sivaganga Dist), Sular (Coimbatore Dist), Airport Madurai (Madurai Dist), Red hills (Tiruvallur Dist), Coimbatore south (Coimbatore Dist), Bhavani (Erode Dist), Kvk kattukuppam arg (Kancheepuram Dist), Pallipattu (Tiruvallur Dist), Ap peelamedu (Coimbatore Dist), Kodaikanal (Dindigul Dist), Uttamapalayam (Theni Dist), Bhavanisagar (Erode Dist), Sathyamangalam (Erode Dist), G Bazar (Nilgiris Dist), Poonamalle arg (Tiruvallur Dist), Chembarabakkam (Tiruvallur Dist), Poonamallee (Tiruvallur Dist), Thalavadi (Erode Dist), Kovilankulam (Virudhunagar Dist), Tiruchengode (Namakkal Dist), Naduvattam (Nilgiris Dist), Tiruvallur (Tiruvallur Dist), Kalugumalai (Toothukudi Dist) 1 each.

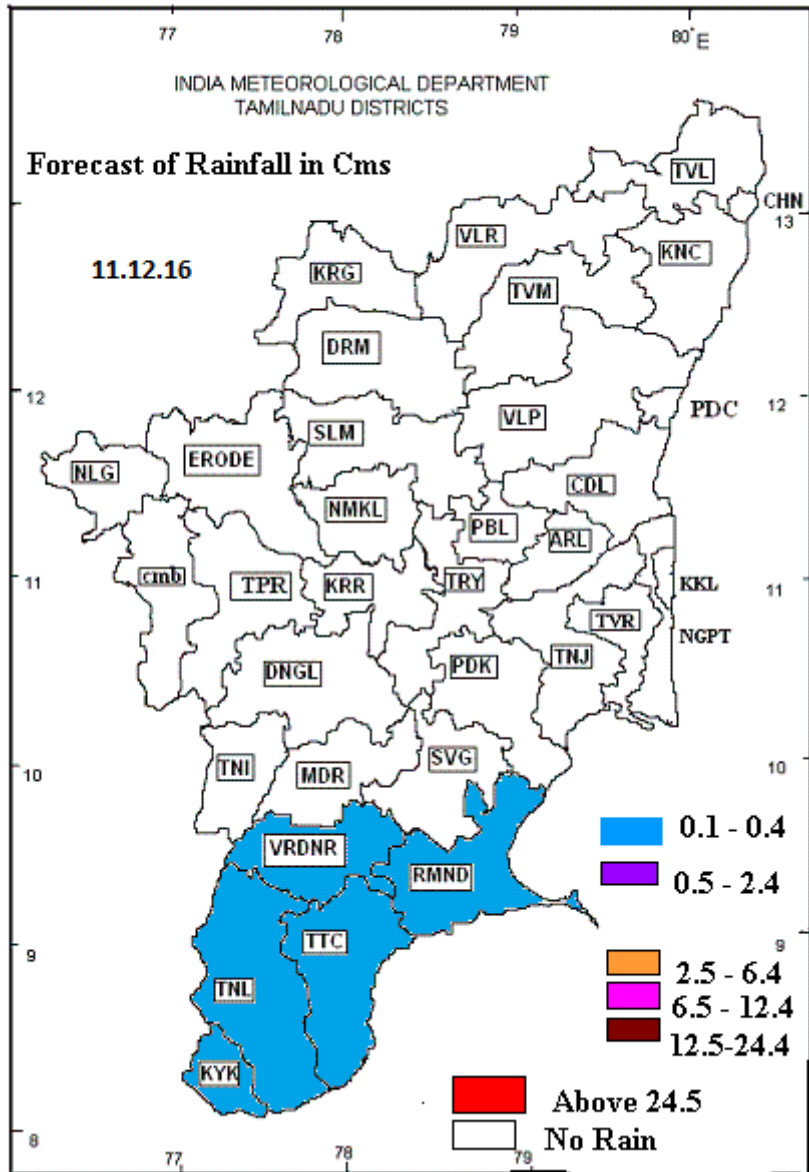
05.12.16 : Pondicherry (Puducherry Dist) 5, Vanur (Villupuram Dist) 4, Thiruvallangadu (Tiruvallur Dist) 3, Vandavasi (Tiruvannamalai Dist), Vilupuram (Villupuram Dist), Mylam AWS (Villupuram Dist), Yercaud (Salem Dist), Tiruvallur (Tiruvallur Dist), Cuddalore (Cuddalore Dist), Sathanur Dam (Tiruvannamalai Dist), Kallakurichi (Villupuram Dist) 2 each, Sankarapuram (Villupuram Dist), Gudiyatham (Vellore Dist), Tiruttani (Tiruvallur Dist), Panruti (Cuddalore Dist), Alangayam (Vellore Dist), DGP office (Chennai Dist), Melalathur (Vellore Dist), ChiDambaram AWS (Cuddalore Dist), Chengalpattu (Kancheepuram Dist), Pallipattu (Tiruvallur Dist), Chembarabakkam arg (Tiruvallur Dist), Chembarabakkam (Tiruvallur Dist), Tindivanam (Villupuram Dist) 1 each.

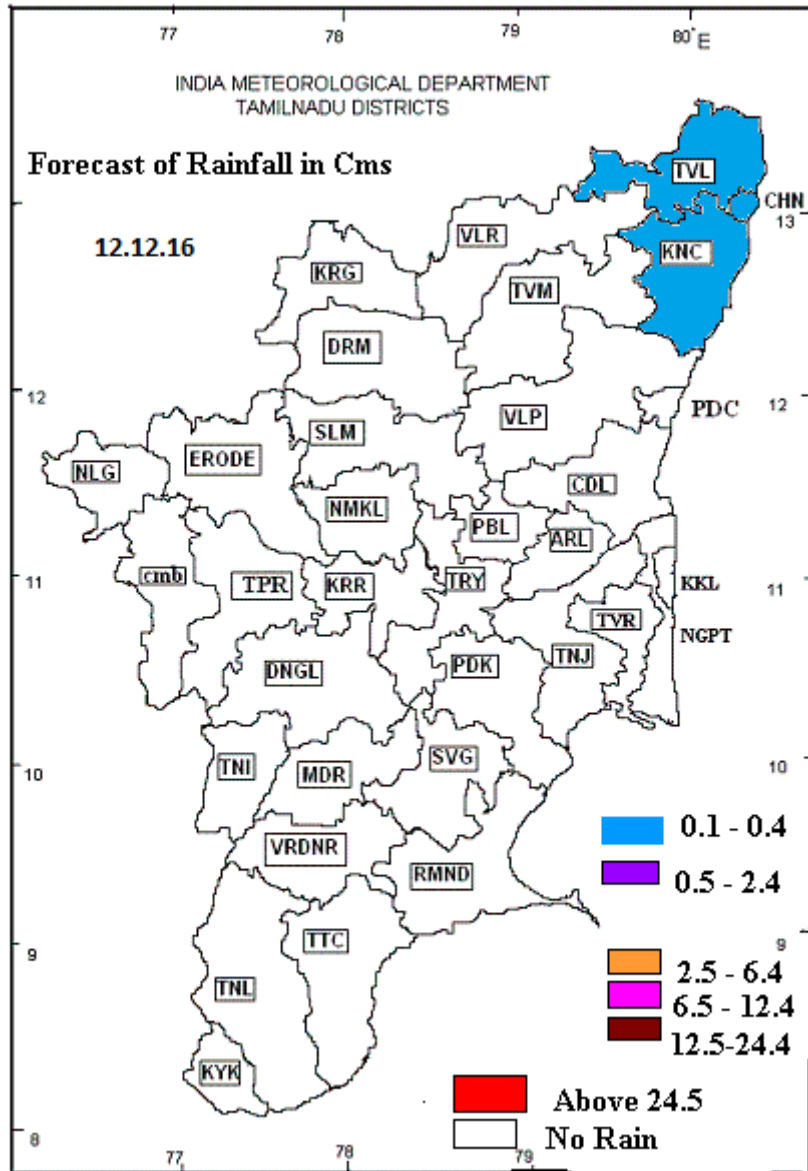
06.12.16: Kuzhithurai (Kanyakumari Dist) 3, Nanguneri (Tirunelveli Dist),
Watrap (Virudhunagar Dist) 1 each

**DISTRICT LEVEL ENSEMBLE WEATHER FORECAST ISSUED ON: 07.12.2016
VALID FOR THE NEXT 5 DAYS**









Districtwise Agromet Advisories

Chennai ,Kancheepuram ,Villupuram ,Thiruvannamalai ,Thiruvallur ,vellore & Cuddalore

Livestock:

1. Light rainfall may be expected on 08.12.2016, 09.12.2016 & 12.12.2016.
 2. To prevent the endoparasitic infestation animals should be allowed for grazing in the morning after the dew dried off.
 3. Feed ingredient for the concentrate feed should be stored in rainproof areas to avoid development of aflatoxin.
 4. During rainy time kids, lambs and calves are to be protected from rain and chillness by covering with gunny bags and side wall may be covered. Provide adequate bedding for calves, kids and lambs and also providing lights to keep them warmer.
 5. Avoid stagnation of water nearby animal shed to prevent vector born diseases to the animals.
- Agriculture (Krishi Vigyan Kendra, Kattupakkam) Imp. Crops: Rice, Sugarcane and Groundnut
1. To control rice stem borer, spray CartapHydrochloride 50 % SP @ 1000 g/ha or Phosphamidon 40% SL @ 1250 ml/ha.
 2. To control blast in rice apply Carbendazim 50 WP or Tricyclozole 75 WP or Metominostrobin 20 SC or Azoxystrobin 25 SC @ one gram or one ml in one litre of water.

KARAIKAL

- ❖ To control rice stem borer, spray CartapHydrochloride 50 % SP @ 1000 g/ha or Phosphamidon 40% SL @ 1250 ml/ha.
- ❖ To control leaf folder in rice, release *Trichogramma chilonis* @ 5 cc (1,00,000/ha) thrice at 37, 44 and 51 days after planting or Azadirachtin 0.03% 1000 ml/ha or Acephate 75% SP @ 666-1000 g/ha. Avoid application of excessive nitrogenous fertilizers.
- ❖ To control blast in rice apply Carbendazim 50 WP or Tricyclozole 75 WP or Metominostrobin 20 SC or Azoxystrobin 25 SC @ one gram or one ml in one litre of water.

PUDUCHERRY

- ❖ To control mealy bug in rice spray Buprofezin 25 SC @ 800 ml/ha or Thiamethoxam 20 WG @ 100 g/ha.
- ❖ As a prophylactic measure to manage diseases in rice foliar spray of *Pseudomonas fluorescence* @ 0.5% (5 g / ml per litre) may be done commencing from 45 DAT at 10 days interval for 3 times.
- ❖ To control rice stem borer, spray CartapHydrochloride 50 % SP @ 1000 g/ha or Phosphamidon 40% SL @ 1250 ml/ha.
- ❖ To control leaf folder in rice, release *Trichogramma chilonis* @ 5 cc (1,00,000/ha) thrice at 37, 44 and 51 days after planting or Azadirachtin 0.03% 1000 ml/ha or Acephate 75% SP @ 666-1000 g/ha. Avoid application of excessive nitrogenous fertilizers.

Nilgiris

No rainfall is expected in the district for next five days. Spraying PPFM @ 8 ml per litre of water and applying 8 kg VAM fungus at the time showing will save the crop during drought periods. In Pepper, Spraying of Growth Hormone @ 40PPM in water at berry bearing stage will boost the size of the Peppercorns resulting in good yields. December is the opt season for pruning operation in Pomegranate. After harvesting present yield, one third of shoots could be pruned during this month. Since ground frost is expected for next two days, necessary measures may be taken to protect the crops from ground frost.

ARIYALUR

Crop: Rice, Black gram, Sugarcane, Cotton Stage: Samba: flowering stage; Thaladi : Tillering stage Samba/Thaladi paddy fields to eliminate or rectify nutrient deficiency, top dressing can be done (22 kg urea + 18 kg gypsum + 4 kg neem cake mixed well and keep it over night and add 10 kg MOP before top dressing). Bacterial Leaf Blight and Bacterial Leaf Streaks are being noticed in the samba paddy due to prevailing weather condition. To control this spray fresh cow dung extract 20%(Dissolve 40 kg of cowdung in 100 litre of water and kept for overnight then supernatant solution is collected from this after that add 100 litre of water then sprayed for 1 acre) twice (Starting from initial appearance of the disease and another at fortnightly interval) or copper hydroxide at 500 g/ac in 200 litre of water. BPH incidence is being noticed in the samba paddy fields. To manage the BPH incidence in a field, drain the excess water and also give aeration to crop. To manage this spray, Thiamethoxam WDG 40g/acre or Buprofezin 25 SC 320 ml/acre towards the base of the tillers. Director Parameters Past weather Rainfall (mm) 23.7 Maximum temperature (°C) 23 – 32 Minimum temperature (°C) 19 – 23 Cloud cover (Octa) 3 – 8 Relative humidity (%) 44 – 96 Wind speed (km/ hr) 8 – 13 mhpayhh ; khtl;l thdpiy rhh;e ;j ntshz;

KARUR ,

Crop: Rice, Black gram, Sugarcane, Cotton Stage: Samba: Active tillering stage Provide adequate drainage facilities to drain the excess rainwater present in the paddy fields to improve better aeration in the root zone. Bacterial Leaf Blight and Bacterial Leaf Streaks are being noticed in the samba paddy due to prevailing weather condition. To control this spray fresh cow dung extract 20%(Dissolve 40 kg of cowdung in 100 litre of water and kept for overnight then supernatant solution is collected from this after that add 100 litre of water then sprayed for 1 acre) twice (Starting from initial appearance of the disease and another at fortnightly interval) or copper hydroxide at 500 g/ac in 200 litre of water. BPH incidence is being noticed in the samba paddy fields. To manage the BPH incidence in a field, drain the excess water and also give aeration to crop. To manage this spray, Thiamethoxam 40g/acre or Buprofezin 25 SC 320 ml/acre towards the base of the tillers.

NAGAPATTINAM , PERAMBALUR , THANJAVUR , THIRUVARUR & THIRUCHERAPALLI

Crop: Rice, Black gram, Sugarcane, Cotton Stage: Samba: flowering stage; Thaladi : Tillering stage Samba/Thaladi paddy fields to eliminate or rectify nutrient deficiency, top dressing can be done (22 kg urea + 18 kg gypsum + 4 kg neem cake mixed well and keep it over night and add 10 kg MOP before top dressing). Bacterial Leaf Blight and Bacterial Leaf Streaks are being noticed in the samba paddy due to prevailing weather condition. To control this spray fresh cow dung extract 20%(Dissolve 40 kg of cowdung in 100 litre of water and kept for overnight then supernatant solution is collected from this after that add 100 litre of water then sprayed for 1 acre) twice (Starting from initial appearance of the disease and another at fortnightly interval) or copper hydroxide at 500 g/ac in 200 litre of water. BPH

incidence is being noticed in the samba paddy fields. To manage the BPH incidence in the field, drain the excess water and also give aeration to crop. To manage this spray, Thiamethoxam WDG 40g/acre or Buprofezin 25 SC 320 ml/acre towards the base of the tillers.

Tiruppur

Blocks	Sugar cane	Banana	Rice	Dry land Crops	Cotton	Turmeric
Avinashi	7 months	7 months	V	S	S & F	RD
Kankayam	10months	7 months	V	S	S & F	RD
Madathukulam	10months	5 months	V	S	S & F	RD
Gudimangalam	8 months	5 months	V	S	S & F	RD
Palladam	7 months	5 months	V	S	S & F	RD
Dharapuram	6 months	6 months	V	S	S & F	RD
Udumalpet	9 months	7 months	V	S	S & F	RD

V- Vegetative; S – Sowing ; RD – Rhizome development stage, S & F ; Square and Flowering

Agro Advisory

Present weather is conducive for Anthrax disease in animals, hence vaccination may be done at near by animal husbandry hospitals.

Present weather is conducive for leaves spot disease in turmeric. Hence, provide fungicide spray Carbendazim @ 1g / lit (or) Mancozeb @ 2g/lit.

Dry weather is anticipated. Apply 3rd top dressing of 38 kg nitrogen and 12.5 kg K₂O per ha in medium duration samba rice at flowering stage with impounded water.

Hence, low minimum temperature is anticipated, monitor the rice crop for blast disease incidence and take a preventive measure by spraying Carbendazim @ 500g / ha in 500 liters of water.

SMS advisory

Present weather is conducive for leaves spot disease in turmeric. Hence, provide fungicide spray Carbendazim @ 1g / lit (or) Mancozeb @ 2g/lit.

Erode

Taluks	Sugarcane	Banana	Turmeric	Rice	Cotton
Ammamet	7 months	7 months	Rd	V	S&F
Bhavani	10months	7 months	Rd	V	S&F
Erode	10months	5 months	Rd	V	S&F
Perundurai	8 months	5 months	Rd	V	S&F
Sathyamangalam	7 months	5 months	Rd	V	S&F
Nambiyur	6 months	6 months	Rd	V	S&F
Gobichettipalayam	9 months	7 months	Rd	V	S&F

V- Vegetative; RD – Rhizome development stage, S & F ; Square and Flowering

Agro Advisory

Present weather is conducive for Anthrax disease in animals, hence vaccination may be done at near by animal husbandry hospitals.

Present weather is conducive for leaves spot disease in turmeric. Hence, provide fungicide spray Carbendazim @ 1g / lit (or) Mancozeb @ 2g/lit.

Dry weather is anticipated. Apply 3rd top dressing of 38 kg nitrogen and 12.5 kg K₂O per ha in medium duration samba rice at flowering stage with impounded water.

Hence, low minimum temperature is anticipated, monitor the rice crop for blast disease incidence and take a preventive measure by spraying Carbendazim @ 500g / ha in 500 liters of water.

SMS advisory

Present weather is conducive for leaves spot disease in turmeric. Hence, provide fungicide spray Carbendazim @ 1g / lit (or) Mancozeb @ 2g/lit.

Coimbatore

Blocks	Sugar cane	Rice	Dry land Crops	Cotton
Thondamuthur	7 months	V	S	S & F
Karamadai	10months	V	S	S & F
Sulur	10months	V	S	S & F
Sultanpet	8 months	V	S	S & F
Pollachi	7 months	V	S	S & F
P.N Palayam	6 months	V	S	S & F
Kinathukadavu	9 months	V	S	S & F
Annur	7 months	V	S	S & F
Madukarai	9 months	V	S	S & F
Annaimalai	7 months	V	S	S & F

V- Vegetative; V; S – Sowing; S & F; Square and Flowering

Agro Advisory

Present weather is conducive for Anthrax disease in animals, hence vaccination may be done at near by animal husbandry hospitals.

Present weather is conducive for leaves spot disease in turmeric. Hence, provide fungicide spray Carbendazim @ 1g / lit (or) Mancozeb @ 2g/lit.

Dry weather is anticipated. Apply 3rd top dressing of 38 kg nitrogen and 12.5 kg K₂O per ha in medium duration samba rice at flowering stage with impounded water.

Hence, low minimum temperature is anticipated, monitor the rice crop for blast disease incidence and take a preventive measure by spraying Carbendazim @ 500g / ha in 500 liters of water.

SMS advisory

Present weather is conducive for leaves spot disease in turmeric. Hence, provide fungicide spray Carbendazim @ 1g / lit (or) Mancozeb @ 2g/lit.

THOOTHUKUDI

Crop/ Farming system	Stage / Activities	Advisories
Rice	Vegetative	In the anticipated weather having moderate cloud cover, light rainfall and high humidity, the incidence of stem borer and leaf folder is noticed in rice at vegetative stage. To control, release <i>Trichogramma japonicum</i> for stem borer and <i>Trichogramma chilonis</i> for leaf folder thrice @ 1,00,000/ ha. Spray <i>Bacillus thuringiensis</i> 1 kg/ ha.
Cotton	Squaring stage	In the prevailing weather condition, stem weevil and root rot incidence is noticed in cotton. For controlling stem weevil, Spot drench with 0.1% Carbendazim or 0.05% Benomyl. To control root rot disease spray any one of the following insecticides Carbaryl 50 WP@ 2.5 kg/ha Carbofuran 3G @ 33.3 kg/ha
Chilli	Vegetative stage	In the expected weather, incidence of dieback disease is observed in chilli. To control, Spraying ziram 0.25% or captan 0.2% or a combination of zineb and copper oxychloride (e.g. Miltox 0.2%) three times. The first spraying should be given just before flowering and the second at the time of fruit formation. The third spraying may be given a fortnight after second spraying. The expected weather having moderate cloud cover and humidity is conducive for the incidence of thrips in chilli. The affected plants show symptoms of crinkling and upward curling of leaves and elongation of petiole. For controlling this pest, spray imidachloprid 17.8 % SL @ 3 ml/ 10 l of water or dimethoate 30% EC@ 1 ml/ lit.

SMS: Rain: 08- 11.12.16: 0.5, 5, 4& 2 mm respectively. Cotton- to control stemweevil, spot drench with 0.1% Carbendazim or 0.05% Benomyl, root rot - Carbofuran 3G@33.3 kg/ha.

TIRUNELVELI

Crop/ Farming system	Stage / Activities	Advisories
Rice	Vegetative	In the anticipated weather having moderate cloud cover, light rainfall and high humidity, the incidence of stem borer and leaf folder is noticed in rice at vegetative stage. To control, release <i>Trichogramma japonicum</i> for stem borer and <i>Trichogramma chilonis</i> for leaf folder thrice @ 1,00,000/ ha. Spray <i>Bacillus thuringiensis</i> 1 kg/ ha.
Cotton	Squaring stage	In the prevailing weather condition, stem weevil and root rot incidence is noticed in cotton. For controlling stem weevil,

		Spot drench with 0.1% Carbendazim or 0.05% Benomyl. To control root rot disease spray any one of the following insecticides Carbaryl 50 WP@ 2.5 kg/ha Carbofuran 3G @ 33.3 kg/ha
Chilli	Vegetative stage	In the expected weather, incidence of dieback disease is observed in chilli. To control, Spraying ziram 0.25% or captan 0.2% or a combination of zineb and copper oxychloride (e.g. Miltox 0.2%) three times. The first spraying should be given just before flowering and the second at the time of fruit formation. The third spraying may be given a fortnight after second spraying. The expected weather having moderate cloud cover and humidity is conducive for the incidence of thrips in chilli. The affected plants show symptoms of crinkling and upward curling of leaves and elongation of petiole. For controlling this pest, spray imidachloprid 17.8 % SL @ 3 ml/ 10 l of water or dimethoate 30% EC@ 1 ml/ lit.

SMS: Rain: 09- 11.12.16: 10, 10& 2 mm respectively. Cotton- to control stemweevil, spot drench with 0.1% Carbendazim or 0.05% Benomyl, root rot - Carbofuran 3G@33.3 kg/ha.

VIRUDHUNAGAR

Crop/ Farming system	Stage / Activities	Advisories
Cotton	Squaring stage	In the prevailing weather condition, stem weevil and root rot incidence is noticed in cotton. For controlling stem weevil, Spot drench with 0.1% Carbendazim or 0.05% Benomyl. To control root rot disease spray any one of the following insecticides Carbaryl 50 WP@ 2.5 kg/ha Carbofuran 3G @ 33.3 kg/ha
Chilli	Vegetative stage	In the expected weather, incidence of dieback disease is observed in chilli. To control, Spraying ziram 0.25% or captan 0.2% or a combination of zineb and copper oxychloride (e.g. Miltox 0.2%) three times. The first spraying should be given just before flowering and the second at the time of fruit formation. The third spraying may be given a fortnight after second spraying. The expected weather having moderate cloud cover and humidity is conducive for the incidence of thrips in chilli. The affected plants show symptoms of crinkling and upward curling of leaves and elongation of petiole. For controlling this pest, spray imidachloprid 17.8 % SL @ 3 ml/ 10 l of water or dimethoate 30% EC@ 1 ml/ lit.

SMS: Rain: 10, 11.12.16: 3& 12 mm. Cotton- to control stem weevil, spot drench with 0.1% Carbendazim or 0.05% Benomyl, root rot disease- Carbofuran 3G @ 33.3 kg/ha.

KANYAKUMARI

1. As rainy weather is expected in the coming days strengthening the basins of tree spices has to be carried out to conserve moisture.
2. Pepper: The growing vines may be tied to the standard and trained properly.
3. Rubber: Fix a polythene rain guard to the trunk of the tree above tapping panel. So that tapping is done during rainy season also.
4. Ginger: If rhizome rot is noticed, remove the affected plants. To avoid the spreading of disease pour 1% Bordeaux mixture.
5. Basin preparation for fruits and tree spices may be taken for better rain water harvest

SMS Advisory

- Basin preparation for fruits and tree spices may be taken for better rain water harvest

